

QUOTA BEENLEIGH CITY OF LOGAN EISTEDDFOD

2024

MUSIC SOLOS
SCHEDULE



QUOTA BEENLEIGH
CITY OF LOGAN
EISTEDDFOD

2024 EISTEDDFOD DATES

MUSIC SOLOS/DUOS/TRIOS/QUARTETS – 15th to 22nd July – Crete Street Theatre

MUSIC GROUPS – 23rd to 25th July – Logan Entertainment Centre

DANCE GROUPS – 26th July to 4th August – Logan Entertainment Centre

Studio Groups	- 27 th July & 28 th July
Secondary Schools	- 29 th July to 1 st August
Primary Schools	- 2 nd August
Studio Groups	- 3 rd August & 4 th August

SMALL DANCE GROUPS – 24th and 25th August – Crete Street Theatre

SPEECH & DRAMA – 26th to 28th August – Crete Street Theatre

DANCE SOLOS/DUOS/TRIOS – 29th August to 4th September – Crete Street Theatre

Please **NOTE** dates may change depending on the number of entries, we may need to add additional dates.

CONTACT INFORMATION

PATRON	Tracey Jonsson	
EISTEDDFOD CO-ORDINATOR	Heather Christensen	Mobile: 0415 045 451
ASSISTANT CO-ORDINATOR	Margaret George	Mobile: 0409 472 447
EISTEDDFOD ENQUIRIES	Email	eisteddfod@quotabeenleigh.org.au
	Mail	PO Box 34, BEENLEIGH QLD 4207
	Website	www.quotabeenleigheisteddfod.org
	Facebook	www.facebook.com/quotabeenleigh/

CONVENORS (email is preferred method of contact)

MUSIC GROUPS	Karen Murphy	groupmusic@quotabeenleigh.org.au
MUSIC SOLOS	Karen Murphy	solomusic@quotabeenleigh.org.au
DANCE GROUPS	Margaret George	groupdance@quotabeenleigh.org.au
DANCE SOLOS	Glenda Walsh/Cheryl Billiau	solodance@quotabeenleigh.org.au
SPEECH & DRAMA	Kiran Van Breemen	drama@quotabeenleigh.org.au



VOLUNTEERS & DONATIONS

WE NEED YOUR HELP

The Quota Eisteddfod is run solely with volunteers and each year we have more than 470 shifts requiring volunteers. These priceless people take care of everything from backstage organisation, marshalling, manning the front of house, announcing, music and much more. We have 3 shifts per day of approximately 4 hours, training is given.

We would appreciate your help and would especially encourage our dancers and other young people to assist where possible. It is fun to volunteer and great for your resume!

If you would like to donate cash to be used for Eisteddfod prizes, please enclose your donation with your entry, and record your donation in the appropriate section on the entry form. ***Please note these prizes are allocated by the Eisteddfod committee.***

Donations of \$300 and over will be acknowledged in the program.

If you are able to assist in any capacity, please contact us by email at volunteers@quotabeenleigh.org.au or phone 0415 045 451.

A special thanks to the studio heads, teachers, schools' personnel and parents who are so supportive and encouraging.

In our communities, we know that sport is extremely well represented, however it is very exciting to see the many thousands of young people participating in the performing arts – in genres of music, dance and speech and drama.

We look forward to seeing both new and past entrants, and we welcome you to our Eisteddfod. We wish you all the very best and know that your dedication and commitment will reward you no matter what path your life takes.

A special thanks to our sponsors, donors and volunteers without whom this event could not take place.

See you soon!

The Quota Team



g a s s m a n
**development
perspectives**

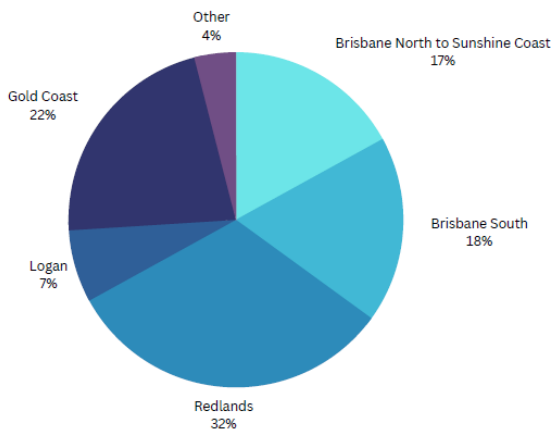
planning
environment
landscape
engineering
survey

SPONSORS & ADVERTISERS

We offer great opportunities to partner with an award-winning event and to reach thousands of consumers in a full year marketing campaign. With marketing covering 12 months, we reach a very wide audience.

Our stakeholders include our performers, parents, teachers, schools, studios, family and friends. Many businesses partner with the Eisteddfod to promote to our wide-reaching audience.

Geographic Split of Performers




We have seen a huge growth in our school groups - with 90 secondary schools and 33 primary schools performing last year. Add to this the 60 performing arts studios and we have more than 9,000 individual performers attend, most crossing our stages many times during the Eisteddfod.

If you are interested in partnering with us, please contact us by emailing eisteddfod@quotabeenleigh.org.au or go to <https://www.quotabeenleigheisteddfod.org/sponsors> or call 0415 045 451.

KCEQUIPMENT
TRACTORS • MOWERS • IMPLEMENTS • SERVICE & PARTS

Cub Cadet
QLD'S

BIGGEST
RANGE OF CUB CADET MOWERS



RIDE ON & ZERO TURN MOWERS • TRACTORS • SPRAYERS • SPREADERS • POWER EQUIPMENT
PROUDLY SERVING LOGAN FOR OVER THIRTY YEARS

SEE FULL RANGE! kcequipment.com.au

OPEN MON-SAT 4 Kaycee Place, Yatala 07 3297 3000

Special Event Presentations

*SERVICE
*SOLUTION
*SUPPLY

awards, apparel, promotional products, trophies, stationery, screen printing, embroidery, small signage, logo design & branding
Specialists in Corporate Presentation Packages

Proud supporters of the Beenleigh Quota Eisteddfod

1 MEDALLIONS
AND BADGES
DESIGN & MANUFACTURE

Call Now..... Mention Beenleigh Eisteddfod and Receive GENEROUS Deductions on your purchases

P. 1300 843 721 email: admin@sepgroup.com.au

We can come 2u - We design 2 your budget - We deliver 2u - We make it easy 4u

EISTEDDFOD RULES

IT IS IMPORTANT THAT EVERY COMPETITOR & TEACHER READS THESE RULES AND CONDITIONS

On entering the Eisteddfod, you will have been deemed to accept these conditions of entry.

General Eisteddfod Rules

1. Specific rules must be read in conjunction with these general rules.
2. This Eisteddfod is open only to persons whose main income is not derived from the area in which they enter.
3. Contestants must be prepared to perform in a Champions concert or Partners event if requested to do so.
4. Age of competitor is as at **1st January** of year of competition.
5. It is the performer's responsibility to check the program for performance venues, dates and times.
Competitors must report to the Marshal on arrival at the Eisteddfod venue.
6. Competitors must be present at the **beginning of the session** as withdrawals may alter the order and anticipated time of a performance. It is unwise to anticipate exact performance times.
7. Solo competitors may compete only once in any section (unless specifically stated otherwise). Students may perform more than once in duo, trio, quartet but NOT consisting of identical competitors in any one section (unless specifically stated otherwise).
8. Groups may compete more than once in any section.
9. In all Duo, Trio and Quartet sections, the names of ALL entrants must be on the Entry Form.
10. The committee has the right to alter or amend the program in any way at any time, to refuse entry, cancel any entry or cancel any section where entries are insufficient. To enhance competition there must be more than TWO entries in a section. In sections where there is only ONE entry, the competitor will be upgraded to the next age group.
11. Competitor numbers must be sufficient before any cash prizes will be awarded in any section. Unless there are at least four competitors in a section, only one prize will be awarded, unless the adjudicator decides otherwise.
12. Group entries must be entered in the oldest performer's age group.
13. TIME LIMITS for each section MUST be observed. An item may be shorter than the time limit but not exceed it. Competitors will not be adjudicated after the set time has elapsed and may be asked to stop performing after the time limit.
14. **CENSORSHIP - The use of costume, words, subject matter or actions which include suicide or murder that is explicit or of a sexual nature is prohibited as these are regarded as unacceptable in a family environment and will result in the disqualification of the competitor at the adjudicator's discretion. This includes dance and the sexualisation of movements – performances must be age appropriate.**
15. Competitors or teachers, interested parties, or any other persons, must not communicate with the Adjudicator.
16. No competitor may perform out of programmed sequence without the approval of the convenor.
17. Competitors may bring their own accompanist except where stated otherwise.
18. The committee has the right to appoint a substitute Adjudicator and the Adjudicator's decision is final. To be read in conjunction with Rule 25.
19. Quota Beenleigh Inc. will not be responsible for copyright and royalty infringements. Please download the Copyright Declaration Form from our website, complete and bring the declaration along with the performance copy, if applicable.

20. Mobile phones must be switched off in backstage and dressing room areas at all venues. No cameras allowed in these areas. Mobile phones and other recording devices are prohibited for recording in all venues. BWP Studios allowed.
21. All competitors enter the Eisteddfod and take part in the Eisteddfod at their own risk and are responsible for their own belongings.
22. Backstage and dressing rooms are to be left in a clean and tidy manner.
23. Entry fees are NOT refundable.
24. Performers, parents, guardians and teachers are expected to behave in a mature and socially acceptable manner.
25. Any protest or objection must be referred to the Convenor within 30 minutes of the Adjudicator's decision. The protest must be submitted by the competitor, teacher or parent and accompanied by a \$50 fee. The fee will be refunded if the claim is found to be valid. The committee reserves the right to request a copy of the competitor's birth certificate if the dispute is age related.
26. Teachers are allowed on stage only as accompanists or conductors for choirs or for items requiring stage set-up.
27. Only designated teachers and performers are permitted back of house at the Logan Entertainment Centre.
28. Failure to comply wholly or partly with any of the rules or conditions may result in disqualification or the withholding of prizes. The decision of the committee on any question or dispute shall be absolutely final. The committee shall decide any matter not covered by the rules or conditions and their decision is final.
29. This Eisteddfod is held in a spirit of friendly competition and good sportsmanship. Canvassing by Studio Owners, Teachers, Competitors or Parents to change a competitor's place of enrolment is regarded as bad sportsmanship and will not be tolerated.
30. Care will be taken for the safety of all competitors, but the Eisteddfod will not be responsible for any injuries sustained by a competitor or damage to property during the Eisteddfod.
31. **PROPS:** Only props that are hand-held and can be taken onto the stage by the competitors are permitted. To be fair to all performers, **props which are larger than hand-held will not be permitted to be used – to avoid embarrassment, please do not bring these props to the venue.**
32. Only performers, teachers or designated assistants, wearing a performer's or teacher's pass, will be permitted into the backstage area at Logan Entertainment Centre.
33. Competitor's passes are compulsory for each performer and must be purchased at the time of entry – additional passes may be purchased at the venue or by contacting eisteddfod@quotabeenleigh.org.au

Specific Rules for Music Solos

1. Please read the General Eisteddfod Rules carefully before reading these Specific Rules.
2. **Music must be uploaded using Music Uploads – the upload will be open from 8th June – 9th July.** No other form of music will be accepted.
3. Please bring a back-up on a USB or smart device in the rare case there is a problem with the music.
4. It is your responsibility to check that the music is correct after uploading – pages in the correct order, and right way up (portrait).
5. In Vocal sections accompanying music must not contain vocal backing.
6. **A performance piece may not be used more than once by the same person. A competitor is NOT able to perform the same piece in the general and bursary sections.**
7. A copy of all music notation (vocals should include notation as well as words) clearly labelled with competitor number and section number are to be uploaded via Music Uploads. Please ensure that all pages are the correct way up.
8. Titles and Composers must be included on all supplied music.
9. **NO tuning is allowed on stage or side stage.**

MUSIC UPLOADS

The Eisteddfod is using Music Uploads to manage the music files, sheet music, performance pieces and voice critiques – this approach is a great way to streamline the processes to ensure longevity of the Eisteddfod.

This means that you do not need to bring music on USBs or CDs or paper files for sheet music and performance pieces. All music will be played from a central computer. We do recommend that you always have a back-up of your files on your phone or tablet in case there is any technology issue.

Please note that studio accounts are not for adding solo performers. Parents will need to create an account and upload performance pieces for solo performers.

Step 1 – View the Music Uploads Videos - [Music Uploads YouTube Channel](#)

Step 2 – Create an Account (if you do not already have one) or Reactivate your Account (if you have previously used Music Uploads).

Step 3 – Add the Region (Competition) – you will need to pay for each competition you add.

Step 4 – Upload Files to Storage

Step 5 – Transfer the Files to the Region (Competition)

Step 6 – Create or Search for a Performer and review that all entries are correct.

Step 7 – Transfer the files for the Performer

Step 8 - Check your Files – ensure it is the correct music and that a document file has all pages the correct way up.

Step 9 – If you wish to **withdraw** an entry, please use that option in Music Uploads and our team will be notified.

Music Uploads will be ready for you to transfer your files by 8th June and the cut-off date will be 9th July – there will be no extensions beyond that date as we need to have the files to Crete St Theatre ready for the start of performances on 15th July.

Further information and pricing for Music Uploads can be found on the FAQ page of our website.



We are using
Music Uploads
For our Music and Voice Critiques

All music will now be uploaded direct and managed by the team at Music Uploads. No more CD's USB's or Emails
If you do not have an active storage plan you will need to sign up at musicuploads.com.au



DEFINITION OF MUSIC TERMS

- SACRED SONG** May include hymns, religious or worship songs, gospel songs, spirituals or arias containing sacred themes.
- ARIA** One aria from any opera or oratorio.
- MUSICAL STAGE, FILM, ANIMATED MOVIE** A song from a film or stage musical, must be in costume.
- FOLK** A folk song is a traditional song by an anonymous composer.



- **Excellent Location**
- **Excellent Facilities**
- **Experienced and Professional Teachers**
- **Prepare for AMEB Exams from Beginner to L.Mus,**
- **Half Price for the First Trial Lesson**
- **Piano, Violin, Cello, Guitar, Ukulele, Drums, Flute, Clarinet, Saxophone and Singing Tuition**
- **Orchestra Training & Performance**





McDonald's Logan is proud to be sponsoring Quota Beenleigh through 2024!

We are giving back to the community by sharing our passion for the performing arts with young performers & their families.

Follow us on Social Media



www.mcdonaldslocallogan.com.au

MACCAS
LOGAN 

Beenleigh • Eagleby • Holmview • Logan Central

Proudly supporting our community

PHOTOGRAPHY & VIDEO

Photography and video are not permitted by members of the audience. BWP Studios will be in attendance and will be videoing solos/duos/quartets but these must be ordered prior to performance.

Publicity

- Publicity shots may be taken during the Eisteddfod
- Please have permission from parents/guardians before performances
- Advise the Convenors if permission has not been obtained
- Eisteddfod prize winner results will be posted on our website and Facebook pages at the end of the eisteddfod.

VIDEO SERVICES

ALL PERFORMANCES WILL BE FILMED

DIGITAL VIDEO

\$18 per Routine / Item

ACCESS IS VIA DIRECT LINK ONLY

**Contact us with performer details to gain access.
We require the NAME & section AGE level.
(Do not send section numbers)**

You may be required to identify your connection to the requested performer for security reasons.

Please allow a week for performances to become available for ordering.

Follow our social media pages for uploading progress!

Facebook message @bwpstudios

or

Email: belinda@bwpstudios.com.au



All products are edited once ordered & sent via our office.

Download Emails arrive from a secure IP service.

bwpstudios.com.au

concerts : **eisteddfods** : showreels : **studio** : portfolios

ENTRY FEES (all prices include GST)

Solos	\$18.00 per entry
Duos/Trios/Quartets	\$25.00 per entry
Bursary	\$60.00 per entry
Competitor Passes	\$6.50 per competitor
Downloadable program	\$13.20
Printed program	\$18.70

Competitor passes cover the **whole music solos eisteddfod**. Passes are in the form of a participant ribbon - this ribbon may be kept by the performers.

Downloadable programs are compulsory and will be added to each entry on Comps Online.

Printed programs will be mailed – these are optional and can be purchased on Comps Online.

Teacher Passes

Complimentary Teachers' passes can be collected at the Eisteddfod from the Quota desk.

Passes are to be returned at the end of the last performance.

CLOSING DATES

Music Solos – 1st May – late closing 8th May

Music uploads opening and closing dates:

Music Solos – 8th June – 9th July

CHANGES TO ENTRIES

We ask that you please check your entries are correct at the time of entry. Making changes is very time consuming for our convenors. This year, any **changes made after the closing date** will incur a \$22 fee for each change. This will be invoiced, and the changes will be made after payment has been received.



AUDIENCE TICKETS (Crete Street)

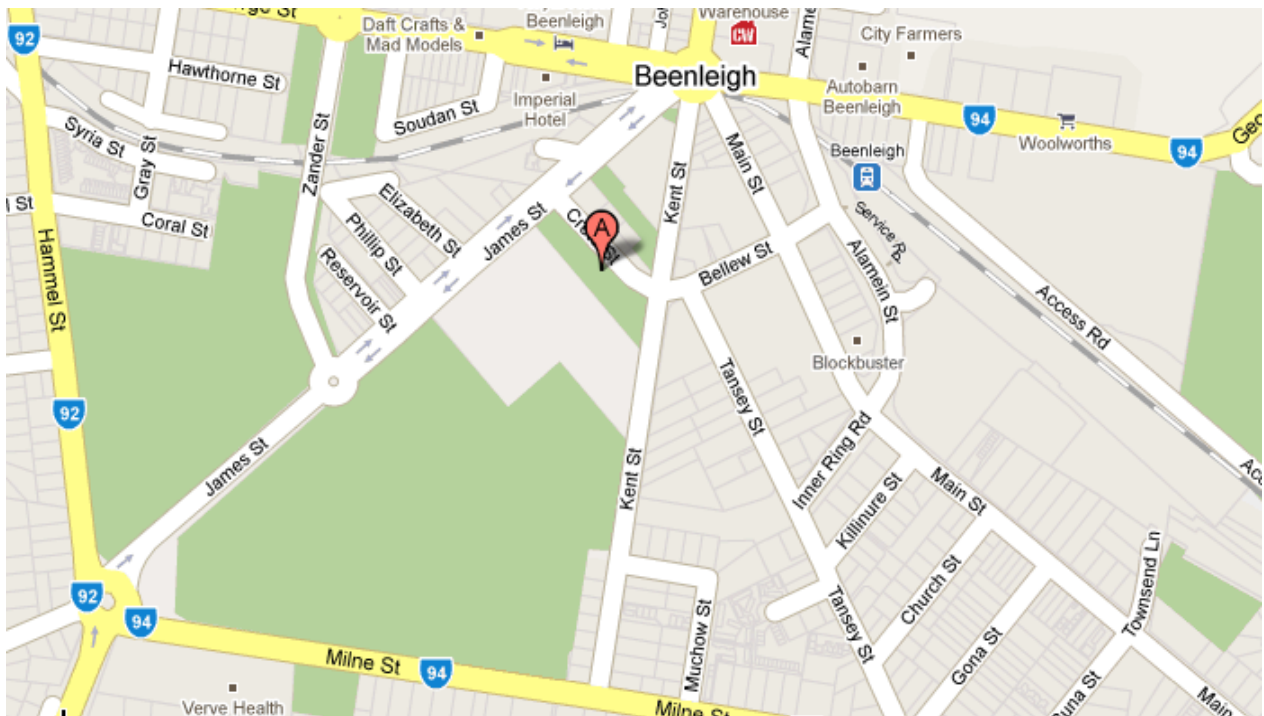
Audience tickets can be purchased from the front desk at Crete Street Theatre – EFTPOS facilities are available at the theatre – tickets will be available for pre purchase online.

One Session	\$16.00 Adult
	\$8.00 Concession
	\$40.00 Family (2A2C)
Day Pass	\$32.00 Adult
	\$16.00 Concession
	\$80.00 Family (2A2C)
Season Pass	\$50.00 Adult

Season pass covers all **solo music performances** at Crete Street Theatre

LOCATION

Crete Street Theatre, Cnr Crete Street and Kent Street, Beenleigh



SPECIAL NOTE FOR PERFORMERS

Please note: we DO NOT provide accompanists.

You may provide a mp3 backing track (with your Music Upload file) or alternatively, provide your own accompanist. These can be found on the following websites:

www.musicteacher.com.au and www.accompanistsguildofqld.org

The following accompanists have indicated that they are able to be contacted:

Dave Mibus: Phone 0404 616 974

Maria Hamon: Phone 0417 493 560

All arrangements must be made between the performer and the accompanist as per general rule 16.

At Crete Street Theatre, a piano is the only instrument provided.

***NEW* - this year we will be providing a piano pedal extender for all students to use, if needed.**

Please do not bring your own pedal extender.

ALL ABILITIES SECTIONS

All sections are a maximum of 4 minutes

Entry fee – Solo \$18 – Duet/Trio/Quartet \$25		
Section No	Description	Notes
Open		
513	Vocal – All Abilities – Own Choice – NEW SECTION	
514	Vocal Duet/Trio/Quartet – All Abilities – Own Choice – NEW SECTION	

These sections are for performers who have a disability. In these sections, we encourage strong participation from people with a disability but understand that supporters/teachers (without a disability) are sometimes required to perform on stage. Where supporters/teachers are on stage with the performers who have a disability, they are required to wear an armband on each arm, which will be supplied by Quota Beenleigh City of Logan Eisteddfod prior to entering the stage.

All sections are for Open age groups and can include performers of any age i.e. there is no lower or upper age limit.



BEENLEIGH STATE HIGH SCHOOL
Aim Higher

Beenleigh State High School catering for the needs of the Beenleigh community for 60 years!

WE CARE | WE ARE RESPONSIBLE | WE ACHIEVE

07 3442 3777
www.beenleighshs.eq.edu.au

40 Alamein Street,
Beenleigh QLD 4207

Proudly supported by

Bert VAN MANEN MP
Federal Member for **Forde**

- Level 1, 110-112 George Street, Beenleigh QLD 4207
- 07 3807 6340 bert.vanmanen.mp@aph.gov.au
- bertvanmanen.com.au BertvanManen.Page

Authorised by Bert van Manen, Local Member of Queensland, Level 1, 110-112 George St, Beenleigh QLD 4207

CONCRETIS PCV ARE YOUR POLISHED CONCRETE FLOORING SPECIALISTS IN SOUTHEAST QUEENSLAND

Our dedicated team has been established by sound management practices and our goal is to provide our customers with service and quality of workmanship that is second to none.

**CONTACT US TODAY
OR VISIT OUR SHOWROOM TO SEE OUR RANGE**

1300 733 813
www.concretis.com.au

Showroom: Unit 3/134 Siganto Drive, Helensvale, Qld 4212

- Polished Concrete
- Concrete Resurfacing
- Concrete Sealing and Curing
- Concretis Polished Concrete Veneer
- Epoxy Coatings
- Floor Preparation
- Flake Floors

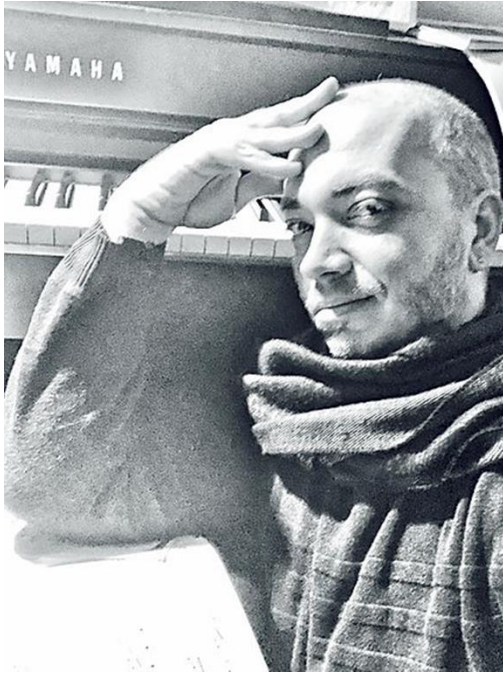
QBCC: 15196015

Club Beenleigh

BULL'N BARRA RESTAURANT

28A Alamein Street Beenleigh Ph: 3807 5836 clubbeenleigh.com.au Find us on

ADJUDICATOR – DANIEL JOHNSON



Pianist, Daniel Johnson, has been described by Yamaha Australia as "masterful and insightful", and his Chopin described as "stunning" and "a true pianist" by the late, internationally renowned concert pianist, Dr. Marilyn Meier. Born and raised in Mount Isa, Daniel began piano lessons locally with Pam Breen. After winning the Yamaha Keyboard Award for Queensland and the Yamaha Most Outstanding Performer of the year in 2000, he commenced studies at the Queensland Conservatorium of Music with Oleg Stepanov and Dr. Diane Selmon. He then continued studies at the School of Creative Arts, University of Southern Queensland with concert pianists Wendy Lorenz, Renate Turini, Dr. Marilyn Meier, and at the conclusion of his degree with Helen Smith.

Daniel gives masterclasses, adjudicates, and examines for various piano competitions and eisteddfods across Australia. He has broadcast live recitals for the MBS network as part of the City Hall Recital Series in Brisbane and the New Sounds

Recital Series at the Queensland Gallery of Modern Art. He has presented research papers for international conferences such as the Inaugural Messiaen International Conference and has been invited each year since 2009 to present research and perform at the World Piano Conference in Novi Sad, Serbia.

An advocate for Australian composers, Daniel has focused most of his academic research on the vocal, symphonic, and instrumental works of composer Miriam Hyde. He has piano works dedicated to him by Australian composer, Phillip Wilcher (*Pirouettes*, *5 Nocturnes for Left Hand Alone*), and has given world premieres of piano works composed for him by American composer, Forrest Starling (*Nocturne for Piano*). He is currently recording piano works by Anthony Moles and Dr. Nicole Murphy, and later in the year performs the complete music for clarinet and piano by Miriam Hyde with clarinetist Catherine Motteram.

Daniel serves as a councillor, mentor, and as the artistic director of *The Marilyn Meier Chopin Award* with the Queensland Music Teachers Association (QMTA). He holds examination and performance diplomas from Trinity College (London), ABRSM, and the Australian Music Examinations Board (AMEB) where he is also a senior examiner for piano, and a national/international examiner for Rockschoool. Daniel has a Master of Music majoring in piano performance and analysis with distinction from the University of Queensland where he studied with Professor Max Olding. He has lectured in analysis/theory at UQ where he is currently a PhD candidate researching and performing the works of Miriam Hyde and Sergei Rachmaninoff. When he isn't busy practicing, he is working with students at his private studio *The Artistry Labs*: an audition-based program for advanced musicians in Brisbane.

COMPOSITION ADJUDICATOR – NICOLE MURPHY



Australian composer Nicole Murphy’s music has been described as “exquisite and sensitive” (Sydney Morning Herald), “strong and compelling” (Loudmouth) and “full of exhilarating tension” (Arts Knoxville). She has been commissioned by eminent arts organisations including the Australian Ballet, the Royal Academy of Dance (London), the Melbourne Symphony Orchestra, Experiments in Opera/Symphony Space (New York), Orchestra Victoria, and Wild Rumpus (San Francisco).

Nicole is the recipient of various awards, including the Theodore Front Orchestra Prize (2023), the inaugural UNSW/Layton Composer Fellowship (2018), Ensemble Offspring’s Noisy Women Commission (2019), and the MAFB International Commissioning Prize (2015). In 2020 she was recognised as one of AMP’s ‘Tomorrow Makers’. Her 2016 piano trio, *Spinning Top*, is included on the ABC Classic album ‘Women of Note: A Century of Australian Composers’. Nicole teaches composition at the Queensland Conservatorium Griffith University and holds a PhD in composition from the University of Queensland.

Joe knows banking

If you need help with yours, you need to meet Joe. Joe shares his knowledge of banking so you can achieve what you want from life.

If you need help with your banking, call Joe Lydeamore, Branch Manager on 0406 698 544 or search Bendigo Bank Beenleigh.



Beenleigh

Bendigo and Adelaide Bank Limited ABN 11 068 049 178, AFSL/Australian Credit Licence 237879. A1415949 OUT_35421606 26/02/2024



SONGBIRD BURSARY

To be performed on Friday, 19th July 2024

BURSARY– ENTRY FEE - \$60.00 - Previous first place winners <u>not</u> eligible to enter	
629	Songbird Bursary - Entrants must be aged over 13 years as at 1st January 2024



- 1st Prize: \$500 Cash plus trophy
- 2nd Prize: \$250 Cash plus trophy
- 3rd Prize: \$100 Cash plus trophy

***NEW* this year – a “Viewer’s Choice” Trophy will also be awarded**

Performers on the night must perform three songs.

Song 1 – Own choice

Song 2 – Own choice from a different genre to Song 1

Song 3 – A song from a Musical Film, Stage or Theatre and must be performed in costume.

This is a competition in its own right acknowledging entrants with a range of vocal types and musical genres.

NOTE: There is a requirement of a minimum of six (6) entrants for this competition to proceed; in the event 6 entries are not received; entry fees will be refunded.

The Bursary’s purpose is to provide fee relief for music lessons for the recipient. It is offered as an incentive to the prospective student to continue his/her studies in the chosen area of interest and will be awarded on the basis of demonstrated excellence as a performer.

We advise you to choose songs that showcase your vocal expressive capabilities, revealing a true feeling for each song and that demonstrates your performance range and technique. Please heed the Censorship rule when choosing songs.

Please note: No microphones will be permitted. This is a competition in natural voice projection.

A piece performed in the Bursary is not allowed to be performed in any other section.



J G Lohrisch Funeral Directors Celebrating 153 Years

Office and Chapel

65 York Street, Beenleigh

(Cnr York and Manila St)

Available 24 hours

Family Owned

Burial & Cremations

Pre-arrangements

SOLO VOCAL SECTIONS (Cont.)

ENTRY FEE

SOLOS - \$18.00

DUO/TRIO/QUARTET - \$25.00

TIME LIMIT: MAXIMUM 4 MINUTES

NO Microphones permitted (unless specified in section)

Section No	Description
7 Years and Under	
460	Vocal - Own Choice (may perform more than once if the music is from a different genre)
461	Vocal – Musical – Stage/Film/ Animated Movie – in costume
462	Vocal Duet/Trio/Quartet – Musical – Stage/Film/Animated Movie – in costume
8 & 9 Years	
468	Vocal - Own Choice (may perform more than once if the music is from a different genre)
469	Vocal – Modern - after 2000
470	Vocal – Popular – before 2000
471	Vocal – Musical – Stage/Film – in costume
472	Vocal – Musical – Animated Movie – in costume
473	Vocal Duet/Trio/Quartet – Musical – Stage/Film/Animated Movie – in costume
10 & 11 Years	
476	Vocal - Own Choice (may perform more than once if the music is from a different genre)
477	Vocal – Modern - after 2000
478	Vocal – Popular – before 2000
479	Vocal – Sacred/ Gospel/ Christmas Song
481	Vocal – Musical – Stage/Film - in costume
482	Vocal – Musical – Animated Movie – in costume
483	Vocal Duet/Trio/Quartet – Musical – Stage/Film/Animated Movie – in costume
12 & 13 Years	
484	Vocal - Own Choice (may perform more than once if the music is from a different genre)
485	Vocal - Modern - after 2000
486	Vocal – Popular – before 2000
487	Vocal – Sacred/ Gospel/ Christmas Song
489	Vocal – Musical – Stage/Film – in costume
490	Vocal – Musical - Animated Movie – in costume
491	Vocal Duet/Trio/Quartet – Musical – Stage/Film/Animated Movie – in costume
492	Vocal – with microphone - Own Choice



SOLO VOCAL SECTIONS (Cont.)

ENTRY FEE

SOLOS - \$18.00

DUO/TRIO/QUARTET - \$25.00

TIME LIMIT: MAXIMUM 4 MINUTES

NO Microphones permitted (unless specified in section)

Section No	Description
14 & 15 Years	
493	Vocal - Own Choice (may perform more than once if the music is from a different genre)
494	Vocal - Modern - after 2000
495	Vocal – Popular – before 2000
496	Vocal – Sacred/ Gospel/ Christmas Song
497	Vocal – Musical – Stage/Film – in costume
498	Vocal – Musical - Animated Movie – in costume
499	Vocal Duet/Trio/Quartet – Musical – Stage/Film/Animated Movie – in costume
500	Vocal – with microphone - Own Choice
Open	
502	Vocal - Own Choice (may perform more than once if the music is from a different genre)
503	Vocal – Modern - after 2000
504	Vocal – Popular – before 2000
505	Vocal – Sacred/ Gospel/ Christmas Song
506	Vocal – Folk or Country
507	Vocal – Blues/Jazz/Swing
509	Vocal – Musical – Stage/Film – in costume
510	Vocal – Musical - Animated Movie – in costume
511	Vocal Duet/Trio/Quartet – Musical – Stage/Film/Animated Movie – in costume
512	Vocal – with microphone - Own Choice
513	Vocal – All Abilities – Own Choice – NEW SECTION
514	Vocal Duet/Trio/Quartet – All Abilities – Own Choice – NEW SECTION



SOLO INSTRUMENTAL SECTIONS

ENTRY FEE

SOLOS - \$18.00

DUO/TRIO/QUARTET - \$25.00

A piano pedal extender will be provided for any competitor to use, if needed (NEW this year)

Section No	Description
7 Years and Under – time limit is a maximum of 3 minutes	
515	Piano
516	Piano Memorised
517	Any Violin/Viola/Cello/Double Bass
518	Any Other Instrument (Competitor may enter more than once - performing on different instruments)
519	Piano Duet/Trio
520	Any Other Instrument Duo/Trio/Quartet
521	Baroque: 1600-1760 - any Instrument
522	Classical: 1730-1820 - any Instrument
523	Romantic: 1815-1910 - any Instrument
524	20 th Century - any Instrument
525	Contemporary: 1980-present - any Instrument
526	Australian Composer - any Instrument
8 & 9 Years – time limit is a maximum of 3 minutes	
527	Piano
528	Piano Memorised
528	Any Percussion
530	Any Violin/Viola/Cello/Double Bass
531	Any Other Instrument (Competitor may enter more than once - performing on different instruments)
532	Piano Duet/Trio
533	Any Other Instrument Duo/Trio/Quartet
534	Baroque: 1600-1760 - any Instrument
535	Classical: 1730-1820 - any Instrument
536	Romantic: 1815-1910 - any Instrument
537	20 th Century - any Instrument
538	Contemporary: 1980-present - any Instrument
539	Australian Composer - any Instrument

SOLO INSTRUMENTAL SECTIONS

ENTRY FEE

SOLOS - \$18.00

DUO/TRIO/QUARTET - \$25.00

Section No	Description
10 & 11 Years – time limit is a maximum of 4 minutes	
540	Piano
541	Piano Memorised
542	Any Percussion
543	Any Violin/Viola/Cello/Double Bass
544	Any Other Instrument (Competitor may enter more than once - performing on different instruments)
545	Piano Duet/Trio
546	Any Other Instrument Duo/Trio/Quartet
547	Baroque: 1600-1760 - any Instrument
548	Classical: 1730-1820 - any Instrument
549	Romantic: 1815-1910 - any Instrument
550	20 th Century - any Instrument
551	Contemporary: 1980-present - any Instrument
552	Australian Composer - any Instrument
12 & 13 Years – time limit is a maximum of 4 minutes	
554	Piano
555	Piano Memorised
556	Any Percussion
557	Any Violin/Viola/Cello/Double Bass
558	Any Other Instrument (Competitor may enter more than once - performing on different instruments)
559	Piano Duet /Trio
560	Any Other Instrument Duo/Trio/Quartet
561	Baroque: 1600-1760 - any Instrument
562	Classical: 1730-1820 - any Instrument
563	Romantic: 1815-1910 - any Instrument
564	20 th Century - any Instrument
565	Contemporary: 1980-present - any Instrument
566	Australian Composer - any Instrument

SOLO INSTRUMENTAL SECTIONS (Cont.)

ENTRY FEE

SOLOS - \$18.00

DUO/TRIO/QUARTET - \$25.00

Section No	Description
14 & 15 Years – time limit is a maximum of 4 minutes	
568	Piano
569	Piano Memorised
570	Any Percussion
571	Any Violin/Viola/Cello/Double Bass
572	Any Other Instrument (Competitor may enter more than once - performing on different instruments)
573	Piano Duet /Trio
574	Any Other Instrument Duo/Trio/Quartet
575	Baroque: 1600-1760 - any Instrument
576	Classical: 1730-1820 - any Instrument
577	Romantic: 1815-1910 - any Instrument
578	20 th Century - any Instrument
579	Contemporary: 1980-present - any Instrument
580	Australian Composer - any Instrument
High School Grade 7-10	
581	Own Composition – music performed on stage – NEW SECTION
582	Own Composition – music submitted for judging (no performance required) - NEW SECTION
High School Grade 11-12	
583	Own Composition – music performed on stage – NEW SECTION
584	Own Composition – music submitted for judging (no performance required) - NEW SECTION
Open – time limit is a maximum of 4 minutes	
585	Piano
586	Piano Memorised
587	Any Other Instrument (Competitor may enter more than once - performing on different instruments – may be percussion instruments)
588	Piano Duet /Trio
589	Any Other Instrument Duo/Trio/Quartet
590	Baroque: 1600-1760 - any Instrument
591	Classical: 1730-1820 - any Instrument
592	Jazz/ Pop/ Latin - any Instrument

EXAMINATION GRADE SOLO SECTIONS

ENTRY FEE

SOLOS - \$18.00

EXAMINATION GRADE LEVEL

One piece only from examination systems of AMEB Qld.

Entrants must not have passed an exam level higher than the one they enter.

Entrants may perform in one Examination Level ONLY on each instrument.

Section No	Description
Examination Grade Level for any Instrument EXCLUDING Piano and Voice	
596	Preliminary
597	Grade 1
598	Grade 2
599	Grade 3
600	Grade 4
601	Grade 5
602	Grade 6
603	Grade 7
604	Grade 8
Examination Grade Level Piano ONLY	
605	Preliminary
606	Grade 1
607	Grade 2
608	Grade 3
609	Grade 4
610	Grade 5
611	Grade 6
612	Grade 7
613	Grade 8
Examination Grade Level Piano ONLY - Sight Reading – NEW SECTIONS	
614	Preliminary
615	Grade 1
616	Grade 2
617	Grade 3
618	Grade 4
619	Grade 5
620	Grade 6
621	Grade 7
622	Grade 8



PRIZES

Competitor numbers must be sufficient before any cash prizes will be awarded in any section. Unless there are at least four competitors in a section, only one prize will be awarded, unless the adjudicator decides otherwise. Other trophies and prizes dependent on sponsorships received.

INDIVIDUAL	
Songbird Bursary	Trophies and cash prizes \$500, \$250 and \$100
Songbird Bursary	Viewer’s Choice Trophy – NEW AWARD

Other trophies will be awarded based on the number of entries in sections.

Unless stated otherwise prizes are:

The top four scores in each section are awarded first, second, third and highly commended places.

Soloists, Duos/Trios/ Quartets receive:

First, Second and Third Medals and Highly Commended Ribbons

PROTECTING YOUR LEGACY



PROTECTING YOUR HOME



PROTECTING YOUR RIGHTS



PROTECTING YOUR ASSETS




Our Services

Family Law | Wills & Estate | Conveyancing |
Commercial law | Civil Litigation | Crime & Traffic | Migration

Contact us : 07 3806 4354
www.cornerstonelawoffices.com.au

SCAN ME! 

Scholarships Available


Canterbury
Being Creative
BEING-CANTERBURY

Music | Dance | Drama
Junior School and Secondary School

Applications are strongly encouraged for students excelling at
**Voice, Clarinet, Cello, Double Bass, Drum Kit,
Lower Brass: Trombone and Trumpet.**

Studio Tuition offered in orchestral and band instruments,
voice, guitar, piano, acting, drama and dance.

arts@canterbury.qld.edu.au | 07 3299 0812
182 Old Logan Village Road, Waterford
canterbury.qld.edu.au

CRICOS 01609C

REGISTRATION OF ENTRIES

Entries will only be available online and payments are to be made by Credit Card (Square).

To enter please go to:

[Online Registration - Quota Beenleigh City of Logan Eisteddfod](#)

Welcome to
Quota Beenleigh Inc
Online Registration



▶ Select Events/Competitions to login

Events/Competitions	Dates	Closing Date	
Quota Beenleigh City of Logan Eisteddfod Dance Groups 2024 Logan Entertainment Centre, Wembley Road, Logan Central, QLD	26 Jul 2024 to 04 Aug 2024	01 May 2024	LOGIN
Quota Beenleigh City of Logan Eisteddfod Dance Small Groups 2024 Crete Street Theatre, Beenleigh, QLD	24 Aug 2024 to 25 Aug 2024	01 Jun 2024	LOGIN
Quota Beenleigh City of Logan Eisteddfod Dance Solos 2024 Crete Street Theatre, Beenleigh, QLD	29 Aug 2024 to 04 Sep 2024	01 Jun 2024	LOGIN
Quota Beenleigh City of Logan Eisteddfod Music Groups 2024 Logan Entertainment Centre, Wembley Road, Logan Central, QLD	23 Jul 2024 to 25 Jul 2024	01 May 2024	LOGIN
Quota Beenleigh City of Logan Eisteddfod Music Solos 2024 Crete Street Theatre, Beenleigh, QLD	15 Jul 2024 to 22 Jul 2024	01 May 2024	LOGIN
Quota Beenleigh City of Logan Eisteddfod Speech & Drama 2024 Crete Street Theatre, Beenleigh, QLD	26 Aug 2024 to 28 Aug 2024	01 Jun 2024	LOGIN

From the Home Page, click Register Now or login if you have an existing account.

- If you are a new user, you will be able to set-up your account, then select our Eisteddfod
- Select **Music Solos 2024**
- Press Login and you will be able to select the sections you wish to enter.
- If you have any issues using Comps-Online, please use the Contact Us section to obtain information from Comps-Online
- If you have any questions regarding sections, event dates, rules or the venue, please contact us at solomusic@quotabeenleigh.org.au

For all information about the Eisteddfod please access our website

