

# QUOTA BEENLEIGH CITY OF LOGAN EISTEDDFOD

2024

DANCE SOLOS  
SCHEDULE



QUOTA BEENLEIGH  
CITY OF LOGAN  
EISTEDDFOD

## 2024 EISTEDDFOD DATES

---

**MUSIC SOLOS/DUOS/TRIOS/QUARTETS** – 15<sup>th</sup> to 22<sup>nd</sup> July – Crete Street Theatre

**MUSIC GROUPS** – 23<sup>rd</sup> to 25<sup>th</sup> July – Logan Entertainment Centre

**DANCE GROUPS** – 26<sup>th</sup> July to 4<sup>th</sup> August – Logan Entertainment Centre

<b>Studio Groups</b>	- 27 <sup>th</sup> July & 28 <sup>th</sup> July
<b>Secondary Schools</b>	- 29 <sup>th</sup> July to 1 <sup>st</sup> August
<b>Primary Schools</b>	- 2 <sup>nd</sup> August
<b>Studio Groups</b>	- 3 <sup>rd</sup> August & 4 <sup>th</sup> August

**SMALL DANCE GROUPS** – 24<sup>th</sup> and 25<sup>th</sup> August – Crete Street Theatre

**SPEECH & DRAMA** – 26<sup>th</sup> to 28<sup>th</sup> August – Crete Street Theatre

**DANCE SOLOS/DUOS/TRIOS** – 29<sup>th</sup> August to 4<sup>th</sup> September – Crete Street Theatre

**Please note dates may change** – depending on the number of entries, we may need to add additional dates.

## CONTACT INFORMATION

---

PATRON	Tracey Jonsson	
EISTEDDFOD CO-ORDINATOR	Heather Christensen	Mobile: 0415 045 451
ASSISTANT CO-ORDINATOR	Margaret George	Mobile: 0409 472 447
EISTEDDFOD ENQUIRIES	Email	<a href="mailto:eisteddfod@quotabeenleigh.org.au">eisteddfod@quotabeenleigh.org.au</a>
	Mail	PO Box 34, BEENLEIGH QLD 4207
	Website	<a href="http://www.quotabeenleigheisteddfod.org">www.quotabeenleigheisteddfod.org</a>
	Facebook	<a href="http://www.facebook.com/quotabeenleigh/">www.facebook.com/quotabeenleigh/</a>

## CONVENORS (email is preferred method of contact)

---

<b>MUSIC GROUPS</b>	Karen Murphy	<a href="mailto:groupmusic@quotabeenleigh.org.au">groupmusic@quotabeenleigh.org.au</a>
<b>MUSIC SOLOS</b>	Karen Murphy	<a href="mailto:solomusic@quotabeenleigh.org.au">solomusic@quotabeenleigh.org.au</a>
<b>DANCE GROUPS</b>	Margaret George	<a href="mailto:groupdance@quotabeenleigh.org.au">groupdance@quotabeenleigh.org.au</a>
<b>DANCE SOLOS</b>	Glenda Walsh/Cheryl Billiau	<a href="mailto:solodance@quotabeenleigh.org.au">solodance@quotabeenleigh.org.au</a>
<b>SPEECH &amp; DRAMA</b>	Kiran Van Breemen	<a href="mailto:drama@quotabeenleigh.org.au">drama@quotabeenleigh.org.au</a>



## VOLUNTEERS & DONATIONS

---

### WE NEED YOUR HELP

The Quota Eisteddfod is run solely with volunteers and each year we have more than 470 shifts requiring volunteers. These priceless people take care of everything from backstage organization, marshalling, manning the front of house, announcing, music and much more. We have 3 shifts per day of approximately 4 hours, training is given.

We would appreciate your help and would especially encourage our dancers and other young people to assist where possible. It is fun to volunteer and great for your resume!

If you would like to donate cash to be used for Eisteddfod prizes, please enclose your donation with your entry, and record your donation in the appropriate section on the entry form. **Please note these prizes are allocated by the eisteddfod committee.**

Donations of \$300 and over will be acknowledged in the program.

If you are able to assist in any capacity, please contact us by email at [volunteers@quotabeenleigh.org.au](mailto:volunteers@quotabeenleigh.org.au) or phone 0415 045 451.

A special thanks to the studio heads, teachers, schools' personnel and parents who are so supportive and encouraging.

In our communities, we know that sport is extremely well represented, however it is very exciting to see the many thousands of young people participating in the performing arts – in genres of music, dance and speech and drama.

We look forward to seeing both new and past entrants, and we welcome you to our Eisteddfod. We wish you all the very best and know that your dedication and commitment will reward you no matter what path your life takes.

A special thanks to our sponsors, donors and volunteers without whom this event could not take place.

See you soon!

### The Quota Team



*Special Events Presentations* **\*SERVICE  
\*SOLUTION  
\*SUPPLY**  
awards, apparel, promotional products, trophies, stationery, screen printing, embroidery, small signage, logo design & branding  
Specialists in Corporate Presentation Packages

**Proud supporters of the Beenleigh Quota Eisteddfod**

**MEDALLIONS**  
**AND BADGES**  
**DESIGN & MANUFACTURE**

**Call Now.....** Mention Beenleigh Eisteddfod and Receive **GENEROUS Deductions on your purchases**

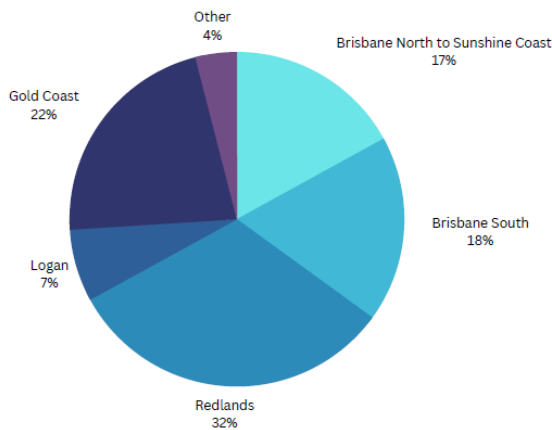
**P. 1300 843 721** email: [admin@sepgroup.com.au](mailto:admin@sepgroup.com.au)  
**We can come 2u - We design 2 your budget - We deliver 2u - We make it easy 4u**

## SPONSORS & ADVERTISERS

We offer great opportunities to partner with an award-winning event and to reach thousands of consumers in a full year marketing campaign. With marketing covering 12 months, we reach a very wide audience.

Our stakeholders include our performers, parents, teachers, schools, studios, family and friends. Many businesses partner with the Eisteddfod to promote to our wide-reaching audience.

### Geographic Split of Performers



We have seen a huge growth in our school groups - with 90 secondary schools and 33 primary schools performing last year. Add to this the 60 performing arts studios and we have more than 9,000 individual performers attend, most crossing our stages many times during the Eisteddfod.

If you are interested in partnering with us, please contact us by emailing [eisteddfod@quotabeenleigh.org.au](mailto:eisteddfod@quotabeenleigh.org.au) or go to <https://www.quotabeenleigheisteddfod.org/sponsors> or call 0415 045 451.

#### PROTECTING YOUR LEGACY



#### PROTECTING YOUR HOME



#### PROTECTING YOUR RIGHTS



#### PROTECTING YOUR ASSETS



### Our Services

Family Law | Wills & Estate | Conveyancing |  
Commercial law | Civil Litigation | Crime & Traffic | Migration



Contact us : 07 3806 4354  
[www.cornerstonelawoffices.com.au](http://www.cornerstonelawoffices.com.au)



## EISTEDDFOD RULES

---

### IT IS IMPORTANT THAT EVERY COMPETITOR & TEACHER READS THESE RULES AND CONDITIONS

**On entering the Eisteddfod, you will have been deemed to accept these conditions of entry.**

### General Eisteddfod Rules

1. Specific rules must be read in conjunction with these general rules.
2. This Eisteddfod is open only to persons whose main income is not derived from the area in which they enter.
3. Contestants must be prepared to perform in a Champions concert or Partners event if requested to do so.
4. Age of competitor is as at **1st January** of year of competition.
5. It is the performer's responsibility to check the program for performance venues, dates and times.  
**Competitors must report to the Marshal on arrival at the Eisteddfod venue.**
6. Competitors must be present at the **beginning of the session** as withdrawals may alter the order and anticipated time of a performance. It is unwise to anticipate exact performance times.
7. Solo competitors may compete only once in any section (unless specifically stated otherwise). Students may perform more than once in duo, trio, quartet but NOT consisting of identical competitors in any one section (unless specifically stated otherwise).
8. Groups may compete more than once in any section.
9. In all Duo, Trio and Quartet sections, the names of ALL entrants must be on the Entry Form.
10. The committee has the right to alter or amend the program in any way at any time, to refuse entry, cancel any entry or cancel any section where entries are insufficient. To enhance competition there must be more than TWO entries in a section. In sections where there is only ONE entry, the competitor will be upgraded to the next age group.
11. Competitor numbers must be sufficient before any cash prizes will be awarded in any section. Unless there are at least four competitors in a section, only one prize will be awarded, unless the adjudicator decides otherwise.
12. Group entries must be entered in the oldest performer's age group.
13. TIME LIMITS for each section MUST be observed. An item may be shorter than the time limit but not exceed it. Competitors will not be adjudicated after the set time has elapsed and may be asked to stop performing after the time limit.
14. **CENSORSHIP - The use of costume, words, subject matter or actions which include suicide or murder that is explicit or of a sexual nature is prohibited as these are regarded as unacceptable in a family environment and will result in the disqualification of the competitor at the adjudicator's discretion. This includes dance and the sexualisation of movements – performances must be age appropriate.**
15. Competitors or teachers, interested parties, or any other persons, must not communicate with the Adjudicator.
16. No competitor may perform out of programmed sequence without the approval of the convenor.
17. Competitors may bring their own accompanist except where stated otherwise.
18. The committee has the right to appoint a substitute Adjudicator and the Adjudicator's decision is final. To be read in conjunction with Rule 25.
19. Quota Beenleigh Inc. will not be responsible for copyright and royalty infringements. Please download the Copyright Declaration Form from our website, complete and bring the declaration along with the performance copy, if applicable.

20. Mobile phones must be switched off in backstage and dressing room areas at all venues. No cameras allowed in these areas. Mobile phones and other recording devices are prohibited for recording in all venues. BWP Studios allowed.
21. All competitors enter the Eisteddfod and take part in the Eisteddfod at their own risk and are responsible for their own belongings.
22. Backstage and dressing rooms are to be left in a clean and tidy manner.
23. Entry fees are NOT refundable.
24. Performers, parents, guardians and teachers are expected to behave in a mature and socially acceptable manner.
25. Any protest or objection must be referred to the Convenor within 30 minutes of the Adjudicator's decision. The protest must be submitted by the competitor, teacher or parent and accompanied by a \$50 fee. The fee will be refunded if the claim is found to be valid. The committee reserves the right to request a copy of the competitor's birth certificate if the dispute is age related.
26. Teachers are allowed on stage only as accompanists or conductors for choirs or for items requiring stage set-up.
27. Only designated teachers and performers are permitted back of house at the Logan Entertainment Centre.
28. Failure to comply wholly or partly with any of the rules or conditions may result in disqualification or the withholding of prizes. The decision of the committee on any question or dispute shall be absolutely final. The committee shall decide any matter not covered by the rules or conditions and their decision is final.
29. This Eisteddfod is held in a spirit of friendly competition and good sportsmanship. Canvassing by Studio Owners, Teachers, Competitors or Parents to change a competitor's place of enrolment is regarded as bad sportsmanship and will not be tolerated.
30. Care will be taken for the safety of all competitors, but the Eisteddfod will not be responsible for any injuries sustained by a competitor or damage to property during the Eisteddfod.
31. **PROPS:** Only props that are hand-held and can be taken onto the stage by the competitors are permitted. To be fair to all performers, **props which are larger than hand-held will not be permitted to be used – to avoid embarrassment, please do not bring these props to the venue.**
32. Only performers, teachers or designated assistants, wearing a performer's or teacher's pass, will be permitted into the backstage area at Logan Entertainment Centre.
33. Competitor's passes are compulsory for each performer and must be purchased at the time of entry – additional passes may be purchased at the venue or by contacting [eisteddfod@quotabeenleigh.org.au](mailto:eisteddfod@quotabeenleigh.org.au)

### **Specific Rules for Dance Solos, Duos and Trios**

1. Please read the General Eisteddfod Rules carefully before reading these Specific Rules
2. **ALL dancers must wear tights** while performing. If performers present to side stage without tights they will not be permitted to dance.
3. The same dance must NOT be performed more than once by any competitor during the Eisteddfod **except for entries in the bursary**. The performances in the bursary may be repeated in the general sections. A group dance must NOT be repeated as a solo performance by any competitor.
4. **PROPS:** Only props that are hand-held and can be taken onto the stage by the competitors are permitted.
5. No competitor is to perform anywhere other than the stage area – this includes entry, exits and NO jumping off stage.
6. There is to be no foreign substance sprayed or spilt onto the stage and NO lit candles or naked flames are permitted. No special effects or rosin to be used on the stage.

## MUSIC UPLOADS

---

The Eisteddfod is using Music Uploads to manage the music files, sheet music, performance pieces and voice critiques – this approach is a great way to streamline the processes to ensure longevity of the Eisteddfod.

This means that you do not need to bring music on USBs or CDs or paper files for sheet music and performance pieces. All music will be played from a central computer. We do recommend that you always have a back-up of your files on your phone or tablet in case there is any technology issue.

**Please note that studio accounts are not for adding solo performers. Parents will need to create an account and upload performance pieces for solo performers.**

**Step 1 – View the Music Uploads Videos - [Music Uploads YouTube Channel](#)**

**Step 2 – Create an Account** (if you do not already have one) or Reactivate your Account (if you have previously used Music Uploads).

**Step 3 – Add the Region (Competition)** – you will need to pay for each competition you add.

**Step 4 – Upload Files to Storage**

**Step 5 – Transfer the Files to the Region (Competition)**

**Step 6 – Create or Search for a Performer** and review that all entries are correct.

**Step 7 – Transfer the files for the Performer**

**Step 8 - Check your Files** – ensure it is the correct music and that a document file has all pages the correct way up.

**Step 9** – If you wish to **withdraw** an entry, please use that option in Music Uploads and our team will be notified.

Music Uploads will be ready for you to transfer your files by 8<sup>th</sup> July and the cut-off date will be 20<sup>th</sup> August – there will be no extensions beyond that date as we need to have the files ready for the start of performances on 29<sup>th</sup> August.

Further information and pricing for Music Uploads can be found on the FAQ page of our website.



**We are using**  
**Music Uploads**  
For our Music and Voice Critiques

All music will now be uploaded direct and managed by the team at Music Uploads. No more CD's USB's or Emails  
If you do not have an active storage plan you will need to sign up at  
[musicuploads.com.au](http://musicuploads.com.au)



Queensland  
**Ballet**

Junior Academy (Years 7-8)  
Intermediate Academy (Years 9-10)  
Senior Academy (Years 11-12) | Certificate IV in Dance

**ENQUIRE NOW**  
aodi@ormeauwoodsshs.eq.edu.au



**FREEMASONS**  
Queensland

## Joe knows banking

If you need help with yours, you need to meet Joe. Joe shares his knowledge of banking so you can achieve what you want from life.

If you need help with your banking, call Joe Lydeamore, Branch Manager on 0406 698 544 or search Bendigo Bank Beenleigh.



Beenleigh

Bendigo and Adelaide Bank Limited ABN 11 088 049 178, AFSL/Australian Credit Licence 237879. A1415949 OUT\_35421806 26/02/2024



## DEFINITION OF DANCE TERMS FOR SOLOS & STAGE DIMENSION

---

<b>CLASSICAL BALLET</b>	Must include classical steps and ballet technique
<b>DEMI CHARACTER</b>	Classical ballet including mime, acting, storytelling which is set to music
<b>HIP HOP</b>	Routine that utilises hip hop/breakdance or rap movements
<b>STRAIGHT TAP</b>	Any style or tempo of tap
<b>WALTZ TAP</b>	Slow tap movements, choreographed to waltz tempo music
<b>SPEED TAP</b>	Fast tap movements, choreographed to fast tempo music
<b>JAZZ</b>	A routine using jazz technique and appropriate music
<b>LYRICAL</b>	Slow controlled ballet movements set to slow music - routine must demonstrate balance, flexibility and control and an understanding of and connection to the lyrics or mood
<b>CONTEMPORARY</b>	Interpretive dance using balance and control in a contemporary style
<b>SONG &amp; DANCE</b>	Routine must contain both singing and dancing. Vocal backing is not permitted in the “vocal” portion of any song and dance performance. However, vocals may be included when dancing.
<b>MUSICAL THEATRE</b>	A dance item choreographed to music from a film or stage musical - may include live singing - <b>no lip synching allowed</b> . No microphones allowed.
<b>CABARET</b>	A floorshow of music, song, dance, and drama – lip synching is permitted. Burlesque not permitted. The performance and costuming must be suitable for a family audience. No microphones allowed.
<b>NOVICE</b>	Entrants in novice must not have placed 1 <sup>st</sup> , 2 <sup>nd</sup> , or 3 <sup>rd</sup> in any genre at any dance competition <b>at the time of entering</b> . Entrants in novice sections are not eligible for entry to championships.
<b>IMPROVISATION</b>	Improvisation is a piece of music that is supplied by the adjudicator. Each performer listens to the music once and then performs. Class wear is the appropriate form of dress and there are no colour restrictions.
<b>STUDENT CHOREOGRAPHY</b>	Performances in this section can be any style of dance and must be independently choreographed and produced by the student (registered performer) without input or assistance from teachers, parents, or other students.
<b>ANY OTHER STYLE</b>	Any other style of dance that is not specifically catered for in an age group. Students may perform more than once but the performances need to be different styles.
<b>STAGE DIMENSION</b>	The stage at Crete Street Theatre is 8.6 wide and 8m deep.

**DANCE NATION**  
ACADEMY OF PERFORMING ARTS

Contact us today to enquire about joining our family for 2022 and beyond!

Weekly Training by only the best industry professionals

0437 699 544 | admin@dnapa.com.au  
27 old pacific highway, yatala 4207

Competition Troupes

Guest Teachers

Private Tuition

Elite Training & Extension Programs

**UNITE IN DANCE**

Scholarships Available

**Canterbury**  
*Being Creative*  
BEING-CANTERBURY

**Music | Dance | Drama**  
Junior School and Secondary School

Applications are strongly encouraged for students excelling at  
Voice, Clarinet, Cello, Double Bass, Drum Kit,  
Lower Brass: Trombone and Trumpet.

Studio Tuition offered in orchestral and band instruments,  
voice, guitar, piano, acting, drama and dance.

arts@canterbury.qld.edu.au | 07 3299 0812  
182 Old Logan Village Road, Waterford  
canterbury.qld.edu.au

CRICOS 01609C

**KC EQUIPMENT**

TRACTORS • MOWERS • IMPLEMENTS • SERVICE & PARTS

**Cub Cadet**

QLD'S

**BIGGEST**

RANGE OF CUB CADET MOWERS

RIDE ON & ZERO TURN MOWERS • TRACTORS •  
SPRAYERS • SPREADERS • POWER EQUIPMENT

PROUDLY SERVING LOGAN FOR OVER THIRTY YEARS

**SEE FULL RANGE!** [kcequipment.com.au](http://kcequipment.com.au)

OPEN MON-SAT 4 Kaycee Place, Yatala 07 3297 3000

## PHOTOGRAPHY & VIDEO

---

Photography and video are not permitted by members of the audience. BWP Studios will be in attendance and will be videoing and taking photos of all performances in dance solos.

### Publicity

- Publicity shots may be taken during the Eisteddfod
- Please have permission from parents/guardians before performances
- Advise the Convenors if permission has not been obtained
- Eisteddfod prize winner results will be posted on our website and Facebook pages at the end of the eisteddfod.

## PHOTOGRAPHY & VIDEO

**ALL ROUTINES WILL BE FILMED AND PHOTOGRAPHED**

**DIGITAL VIDEO      DIGITAL IMAGE**  
**\$18 per Routine / Item      \$12 each Image**

Other size & package options available in the shopping cart!

**ACCESS IS VIA DIRECT LINK ONLY**  
Contact us with performer details to gain access.  
We require the **NAME & section AGE level.**  
(Do not send section numbers)

You may be required to identify your connection to the requested performer for security reasons.

Please allow a week for performances to become available for ordering.

Follow our social media pages for uploading progress!

Facebook message **@bwpstudios**  
or  
Email: **belinda@bwpstudios.com.au**



All products are edited once ordered & sent via our office.

Download Emails arrive from a secure IP service.

**bwpstudios.com.au**

concerts : **eisteddfods** : showreels : **studio** : portfolios





**McDonald's is proud to be sponsoring the Quota Beenleigh City of Logan Eisteddfod for 16 consecutive years!**

**We are giving back to the community by sharing our passion for the performing arts with young performers & their families.**

**Follow us on Social Media**



[www.mcdonaldslocallogan.com.au](http://www.mcdonaldslocallogan.com.au)

**MACCAs LOGAN**  
 Beenleigh • Eagleby • Holmview • Logan Central  
 Proudly supporting our community



**ENQUIRE TODAY FOR UPCOMING TRIALS**

**ASPIRING PERFORMERS PSSC**

**ARE YOU A CREATIVE AND DEDICATED PERFORMER WHO HAS THE POTENTIAL AND PASSION FOR DANCE, DRAMA OR MUSIC?**

The Aspiring Performers Academy (APA) is designed to extend the artistic skills in a chosen area of dance, drama or music through close mentoring and specialised training. If you enjoy being a member of performance groups, participate in industry workshops and learning alongside like-minded students, audition for the Aspiring Performers Academy.

**HOW WE EXTEND OUR STUDENTS:**

- Theatre Arts
- Shakespeare
- Equus/Art
- Community Performance
- Recognised International Events
- Arts in Residence
- Industry Professional Workshops
- Industry Connections
- Creative Education with Industry Change

**PROUDLY PARTNERED WITH:**



**CONTACT**  
[enrolments@pimpamassc.eq.edu.au](mailto:enrolments@pimpamassc.eq.edu.au)



**GIVE THE GIFT OF TIME**

ENSURE THE EISTEDDFOD EXPERIENCE IS AVAILABLE TO ALL OUR YOUNG PERFORMERS FOR MANY YEARS TO COME BY VOLUNTEERING YOUR TIME AT SOME SESSIONS IN 2024

Let us know you are able to help by emailing [info@quotabeenleigh.org.au](mailto:info@quotabeenleigh.org.au)



## ENTRY FEES

---

<b>Dance Solos</b>	\$18.00 per entry
<b>Dance Duos/Trios</b>	\$25.00 per entry
<b>Bursary</b>	\$60.00 per entry
<b>Competitor Passes</b>	\$6.50 per competitor
<b>Downloadable program</b>	\$13.20
<b>Printed program</b>	\$18.70

Competitor passes cover the whole solo dance eisteddfod. Passes are in the form of a participant's ribbon and can be collected at the Eisteddfod. Competitor passes will be added to each entry on Comps Online.

Downloadable programs are compulsory and will be added to each entry on Comps Online.

Printed programs will be mailed – these are optional and can be purchased on Comps Online.

### Teachers' Passes

Complimentary teachers' passes can be collected at the Eisteddfod from the Quota desk and must be returned when leaving the venue.

## CLOSING DATES

---

**Closing Date** for entries is **1<sup>st</sup> June 2024**.

**Late Closing** for entries is **8<sup>th</sup> June 2024** – **entries between 1st June and 8th June incur late fees.**

**No further entries will be accepted after 8th June 2024.**

**Music Uploads** will be available from **8<sup>th</sup> July to 20<sup>th</sup> August** – no extensions beyond this date will be available as we need to have all music downloaded ready for performances commencing on 29<sup>th</sup> August.

**Please mark these dates in your diary now as we often have disappointment when people miss the closing dates.**

## LATE ENTRIES

---

A once-off late fee of \$27.50 will be applied on all entries received after the closing date on Comps Online. Once the late entry period has closed on Comps Online, no further entries will be accepted.

## CHANGES TO ENTRIES

---

We ask that you please check your entries are correct at the time of entry. Making changes is very time consuming for our convenors. This year, any **changes made after the closing date** will incur a \$22 fee for each change. This will be invoiced, and the changes will be made after payment has been received.

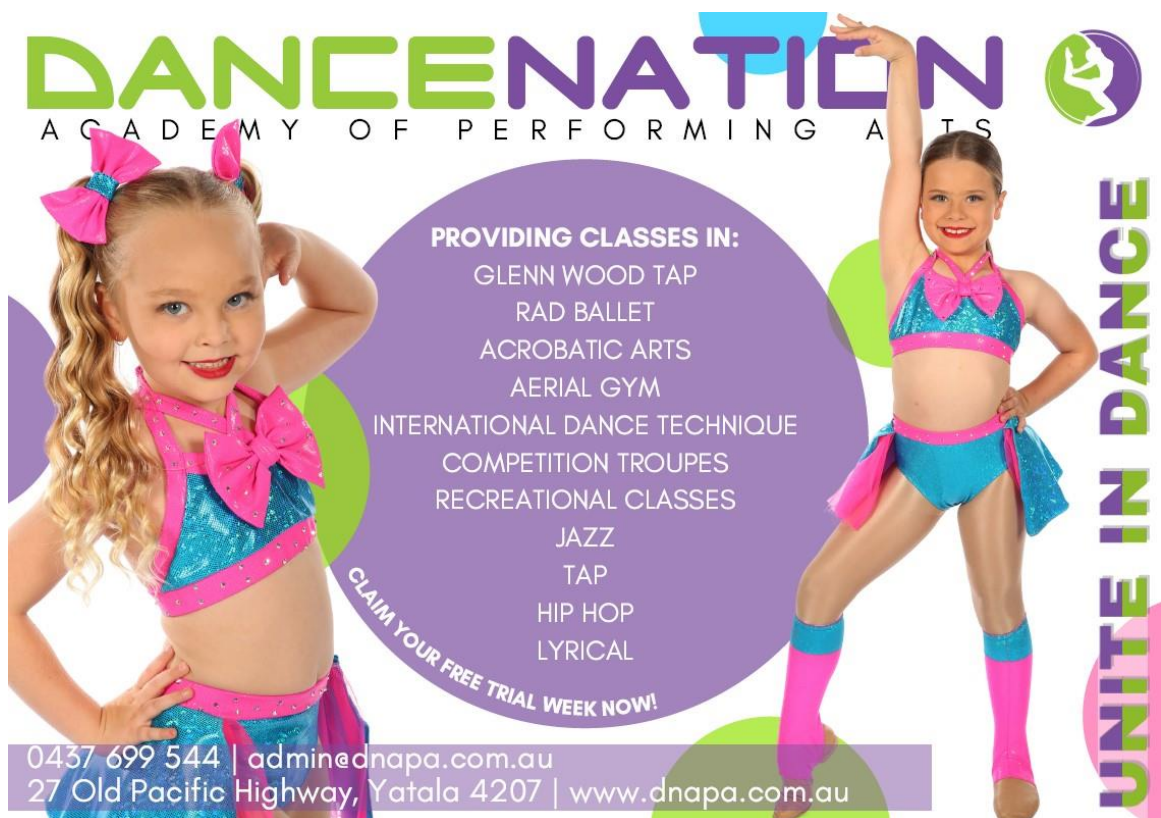
## AUDIENCE TICKETS

---

Audience tickets can be purchased from the front desk at Crete Street Theatre – EFTPOS facilities are available at the theatre – tickets will be available for pre purchase online.

One Session	\$16.00 Adult
	\$8.00 Concession
	\$40.00 Family (2A2C)
Day Pass	\$32.00 Adult
	\$16.00 Concession
	\$80.00 Family (2A2C)
Season Pass	\$50.00 Adult

**Season pass** covers all **solo dance performances** at Crete Street Theatre.



**DANCE NATION**  
ACADEMY OF PERFORMING ARTS

**PROVIDING CLASSES IN:**  
GLENN WOOD TAP  
RAD BALLET  
ACROBATIC ARTS  
AERIAL GYM  
INTERNATIONAL DANCE TECHNIQUE  
COMPETITION TROUPES  
RECREATIONAL CLASSES  
JAZZ  
TAP  
HIP HOP  
LYRICAL

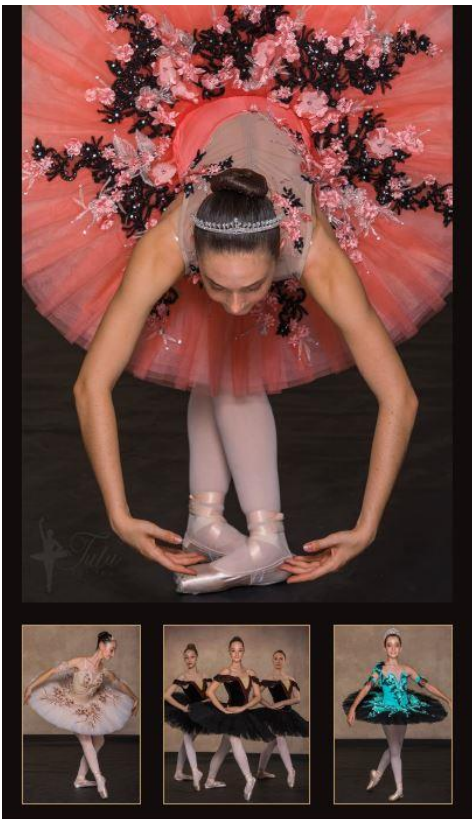
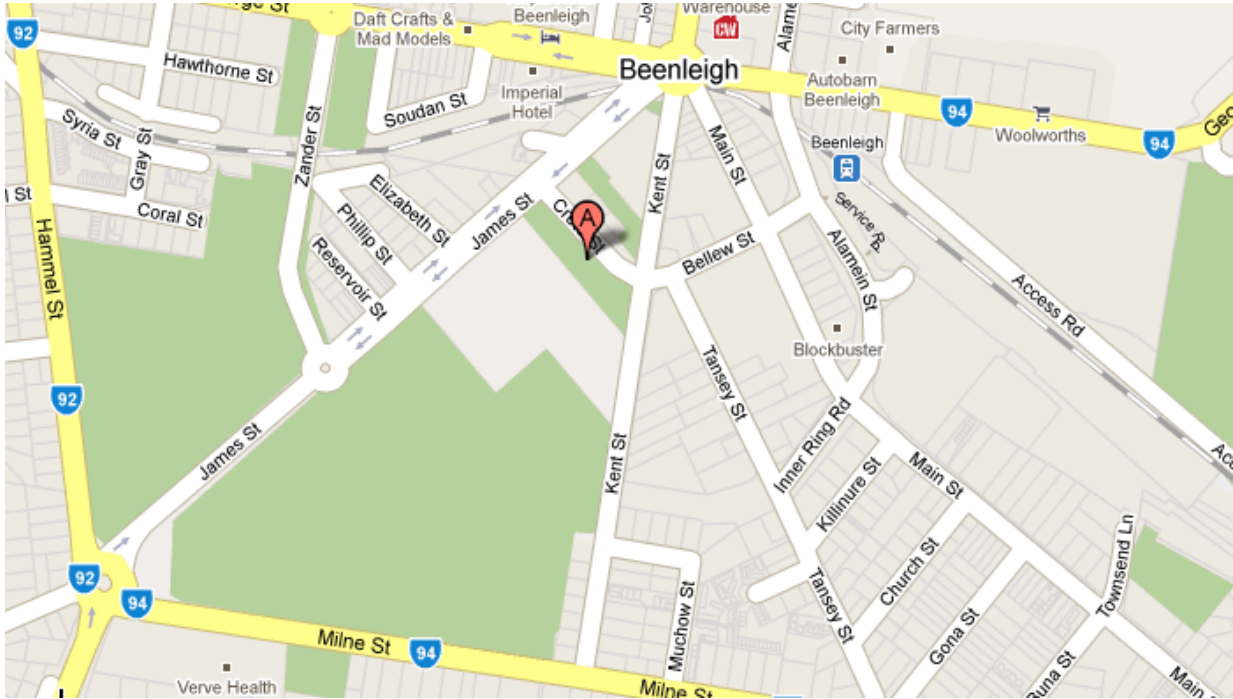
CLAIM YOUR FREE TRIAL WEEK NOW!

0437 699 544 | admin@dnapa.com.au  
27 Old Pacific Highway, Yatala 4207 | www.dnapa.com.au

UNITE IN DANCE

## LOCATION

Crete Street Theatre, Cnr Crete Street and Kent Street, Beenleigh



Level 2, 2 Balgownie Drive,  
Peregian Springs, Qld, 4573  
PO Box 1005,  
Tewantin, Qld, 4565  
P: 0419 703 889  
E: hire@tutuforyou.com.au



Part of Energy Queensland

- **Excellent Location**
- **Excellent Facilities**
- **Experienced and Professional Teachers**
- **Prepare for AMEB Exams from Beginner to L.Mus.**
- **Half Price for the First Trial Lesson**
- **Piano, Violin, Cello, Guitar, Ukulele, Drums, Flute, Clarinet, Saxophone and Singing Tuition**
- **Orchestra Training & Performance**





## ADJUDICATOR

---



**Olivia Hill** is a Brisbane based Theatre Director and has had extensive experience in many fields of the performing arts. She has run a theatre school for 30 years and trained students in speech and drama, singing, classical ballet, jazz, tap and hip hop as well as acrobatics, musical theatre and performance.

Olivia has previously been employed as a teacher and tutor at the Royal Academy of Dance. Her education and training includes the Associate Trinity College London, Licentiate Trinity College London, Royal Academy of Dance Teaching, Commonwealth Society of Teachers of Dancing including Modern Jazz, Tap, Theatrical Diploma and Jazz (honours) plus a Bachelor Arts degree from QUT.

She has been an Eisteddfod Adjudicator for over 20 years both in Queensland and Northern New South Wales for both Dance and Drama and is a member of the Australian Dance Adjudicators.



**BEENLEIGH STATE HIGH SCHOOL**  
*Aim Higher*

*Beenleigh State High School catering for the needs of the Beenleigh community for 60 years!*

**WE CARE | WE ARE RESPONSIBLE | WE ACHIEVE**

07 3442 3777  
www.beenleighshs.eq.edu.au

40 Alamein Street,  
Beenleigh QLD 4207



## PROPOSED TIMELINE FOR SOLO DANCE

---

To assist your planning, we are providing a proposed timeline for solo dance. This is very much dependent on the number of entries received for each age group and may change, but we will attempt to keep to this timeline if possible. We reserve the right to make any changes required to this proposed timeline.

Day 1 – Thursday, 29<sup>th</sup> August

6 years and under

11 Years and under

Day 2 – Friday, 30<sup>th</sup> August

10 Years and under

Moya McKeon OAM Ballet Bursary

Day 3 – Saturday, 31<sup>st</sup> August

13 Years and under

14 Years and under

Day 4 – Sunday, 1<sup>st</sup> September

Opens

Day 5 – Monday, 2<sup>nd</sup> September

12 Years and under

Day 6 – Tuesday, 3<sup>rd</sup> September

7 Years and under

8 years and under

Day 7 – Wednesday, 4<sup>th</sup> September

4 & 5 years

9 Years and under

## SOLO, DUO & TRIO SECTIONS

---

### ENTRY FEE

**SOLOS - \$18.00**

**DUO/TRIO - \$25.00**

All sections are a maximum of 3 minutes except for Song & Any Dance, Musical Theatre / Cabaret which are all 4 minutes.

Section No	Description	
<b>4 &amp; 5 Years and Under</b>		
1	Tiny Tots – any dance – 4 years & under	
2	Tiny Tots – any dance – 5 years & under	
<b>6 Years and Under</b>		
3	Classical Ballet	
4	Demi Character	
5	Jazz Up Tempo	
6	Lyrical	
7	Any Other Style	May perform twice but must be different styles
8	Novice – any style*	See definitions for qualification to enter Novice
9	Any Style <b>Duo or Trio</b>	May perform twice but must be different styles
<b>7 Years and Under</b>		
10	Classical Ballet	
11	Demi Character	
12	Jazz Up Tempo	
13	Lyrical	
14	Any Other Style	May perform twice but must be different styles
15	Novice – any style*	See definitions for qualification to enter Novice
16	Any Style <b>Duo or Trio</b>	May perform twice but must be different styles
<b>8 Years and Under</b>		
17	Classical Ballet	
18	Demi Character	
19	Jazz Up Tempo	
20	Lyrical	
21	Contemporary	
22	Straight Tap	
23	Any Other Style	May perform twice but must be different styles
24	Hip Hop	
25	Improvisation	
26	Novice – any style*	See definitions for qualification to enter Novice
27	Any Style <b>Duo or Trio</b>	May perform twice but must be different styles



## SOLO, DUO & TRIO SECTIONS (Cont.)

### ENTRY FEE

**SOLOS - \$18.00**

**DUO/TRIO - \$25.00**

All sections are a maximum of 3 minutes except for Song & Any Dance, Musical Theatre / Cabaret which are all 4 minutes.

Section No	Description	
<b>9 Years and Under</b>		
28	Classical Ballet	
29	Demi Character	
30	Jazz Up Tempo	
31	Lyrical	
32	Contemporary	
33	Straight Tap	
34	Any Other Style	May perform twice but must be different styles
35	Novice – any style*	See definitions for qualification to enter Novice
36	Any Style <b>Duo or Trio</b>	May perform twice but must be different styles
<b>10 Years and Under</b>		
37	Classical Ballet	
38	Demi Character	
39	Jazz Up Tempo	
40	Lyrical	
41	Contemporary	
42	Straight Tap	
43	Waltz Tap	
44	Speed Tap	
45	Song & Any Dance	May perform twice but must be 1 Song & Dance and 1 Song & Tap
46	Any Other Style	May perform twice but must be different styles
47	Hip Hop	
48	Student Choreography	See definitions for requirements for this section
49	Improvisation	
50	Novice – any style*	See definitions for qualification to enter Novice
51	Classical Ballet or Lyrical <b>Duo or Trio</b>	May perform twice but must be different styles
52	Jazz or Contemporary <b>Duo or Trio</b>	May perform twice but must be different styles
53	Any Style <b>Duo or Trio</b>	May perform twice but must be different styles
<b>11 Years and Under</b>		
54	Classical Ballet	
55	Demi Character	
56	Jazz Up Tempo	
57	Lyrical	
58	Contemporary	
59	Straight Tap	
60	Any Other Style	May perform twice but must be different styles
61	Any Style <b>Duo or Trio</b>	May perform twice but must be different styles

## SOLO, DUO & TRIO SECTIONS (Cont.)

### ENTRY FEE

**SOLOS - \$18.00**

**DUO/TRIO - \$25.00**

All sections are a maximum of 3 minutes except for Song & Any Dance, Musical Theatre / Cabaret which are all 4 minutes.

<b>12 Years and Under</b>		
62	Classical Ballet	
63	Demi Character	
64	Jazz Up Tempo	
65	Lyrical	
66	Contemporary	
67	Straight Tap	
68	Waltz Tap	
69	Speed Tap	
70	Song & Any Dance	May perform twice but must be 1 Song & Dance and 1 Song & Tap
71	Any Other Style	May perform twice but must be different styles
72	Hip Hop	
73	Student Choreography	See definitions for requirements for this section
74	Improvisation	
75	Classical Ballet or Lyrical <b>Duo or Trio</b>	May perform twice but must be different styles
76	Jazz or Contemporary <b>Duo or Trio</b>	May perform twice but must be different styles
77	Any Other Style <b>Duo or Trio</b>	May perform twice but must be different styles
78	All Abilities – Any Style <b>Solo</b>	May perform twice but must be different styles <b>NEW SECTION</b>
79	All Abilities – Any Style <b>Duo or Trio</b>	May perform twice but must be different styles <b>NEW SECTION</b>
<b>13 Years and Under</b>		
80	Classical Ballet	
81	Demi Character	
82	Jazz Up Tempo	
83	Lyrical	
84	Contemporary	
85	Straight Tap	
86	Musical Theatre or Cabaret	
87	Any Other Style	May perform twice but must be different styles
88	Any Style <b>Duo or Trio</b>	May perform twice but must be different styles



g a s s m a n  
**development  
perspectives**

planning  
environment  
landscape  
engineering  
survey



## SOLO, DUO & TRIO SECTIONS (Cont.)

### ENTRY FEE

**SOLOS - \$18.00**

**DUO/TRIO - \$25.00**

All sections are a maximum of 3 minutes except for Song & Any Dance, Musical Theatre / Cabaret which are all 4 minutes.

14 Years and Under		
89	Classical Ballet	
90	Demi Character	
91	Jazz Up Tempo	
92	Lyrical	
93	Contemporary	
94	Straight Tap	
95	Waltz Tap	
96	Speed Tap	
97	Song & Any Dance	May perform twice but must be 1 Song & Dance and 1 Song & Tap
98	Any Other Style	May perform twice but must be different styles
99	Hip Hop	
100	Student Choreography	See definitions for requirements for this section
101	Improvisation	
102	Classical Ballet or Lyrical <b>Duo or Trio</b>	May perform twice but must be different styles
103	Jazz or Contemporary <b>Duo or Trio</b>	May perform twice but must be different styles
104	Any Other Style <b>Duo or Trio</b>	May perform twice but must be different styles



## SOLO, DUO & TRIO SECTIONS (Cont.)

### ENTRY FEE

**SOLOS - \$18.00**

**DUO/TRIO - \$25.00**

All sections are a maximum of 3 minutes except for Song & Any Dance, Musical Theatre / Cabaret which are all 4 minutes.

Open		
105	Classical Ballet	
106	Demi Character	
107	Jazz Up Tempo	
108	Lyrical	
109	Contemporary	
110	Straight Tap	
111	Waltz Tap	
112	Speed Tap	
113	Song & Any Dance	May perform twice but must be 1 Song & Dance and 1 Song & Tap
114	Any Other Style	May perform twice but must be different styles
115	Hip Hop	
116	Student Choreography	See definitions for requirements for this section
117	Improvisation	
118	Musical Theatre or Cabaret	
119	Classical Ballet or Lyrical <b>Duo or Trio</b>	May perform twice but must be different styles
120	Jazz or Contemporary <b>Duo or Trio</b>	May perform twice but must be different styles
121	Any Other Style <b>Duo or Trio</b>	May perform twice but must be different styles
122	All Abilities – Any Style Solo	May perform twice but must be different styles <b>NEW SECTION</b>
123	All Abilities – Any Style <b>Duo or Trio</b>	May perform twice but must be different styles <b>NEW SECTION</b>

Where a very large number of competitors nominate for a section, the Committee reserves the right to split that Section. Requests to change competitors in sections will not be accepted.



### J G Lohrisch Funeral Directors Celebrating 153 Years

Office and Chapel

65 York Street, Beenleigh  
(Cnr York and Manila St)

Available 24 hours

Family Owned

Burial & Cremations

Pre-arrangements

## MOYA McKEON OAM BALLET BURSARY

This is a competition in its own right and performers on the night must perform three dances - Classical Ballet Solo, Demi Character Solo, Improvisation (music supplied by the adjudicator)

**Previous first place winners not eligible to enter - entrants must be 13 years and over as at 1<sup>st</sup> January 2024.**

Entry fee \$60

Section No	Description
124	Moya McKeon OAM Ballet Bursary

Performed Friday evening, 30<sup>th</sup> August 2024

*Previous first place winners of the Moya McKeon or Rose Cottage Bursary are not eligible to enter.*

**This is a competition in its own right and performers on the night must perform three dances – Classical, Demi Character and Improvisation.**

Details:

Entry Fee: \$60.00

### Section 124

1<sup>st</sup> Place: \$500 Cash plus trophy

2<sup>nd</sup> Place: \$250 Cash plus trophy

3<sup>rd</sup> Place: \$100 Cash plus trophy



Proudly supported by  
**Bert**  
**VAN MANEN** MP  
 Federal Member for **Forde**

📍 Level 1, 110-112 George Street, Beenleigh QLD 4207  
 ☎️ 07 3807 6340 ✉️ bert.vanmanen.mp@aph.gov.au  
 🌐 bertvanmanen.com.au 📄 BertvanManen.Page

Admitted to the Roll of Members of the Parliament of Queensland, Level 1, 110-112 George St, Beenleigh QLD 4207



# JPC Dance

## Scholarships

Dance scholarships are available to gifted and talented new students in Years 5 and beyond at John Paul College. Our comprehensive dance program is dedicated to excellence in both an academic and co-curricular capacity.

Our purpose-built dance studio with a professional sprung floor provides students with the adequate space to perfect their craft and practice their routines.

To find out more about our dance and scholarship program visit our website or email [enrolments@jpc.qld.edu.au](mailto:enrolments@jpc.qld.edu.au)

**REGISTER FOR OUR UPCOMING EVENTS**



Register - [jpc.qld.edu.au/events](http://jpc.qld.edu.au/events)

John Paul Drive, Daisy Hill, Queensland 4127  
[jpc.qld.edu.au](http://jpc.qld.edu.au)



**John Paul College**  
Unity | Christ | Learning

CRP 01/2022

## CONCRETIS PCV ARE YOUR POLISHED CONCRETE FLOORING SPECIALISTS IN SOUTHEAST QUEENSLAND

Our dedicated team has been established by sound management practices and our goal is to provide our customers with service and quality of workmanship that is second to none.

**CONTACT US TODAY  
OR VISIT OUR SHOWROOM TO SEE OUR RANGE**

**1300 733 813**  
[www.concretis.com.au](http://www.concretis.com.au)

Showroom: Unit 3/134 Siganto Drive, Helensvale, Qld 4212

- Polished Concrete
- Concrete Resurfacing
- Concrete Sealing and Curing
- Concretis Polished Concrete Veneer
- Epoxy Coatings
- Floor Preparation
- Flake Floors

QBCC: 15196015



## REGISTRATION OF ENTRIES

Entries will only be available online and payments are to be made using Credit Card (Square).

To enter please go to:

[Online Registration - Quota Beenleigh City of Logan Eisteddfod](#)

Welcome to  
Quota Beenleigh Inc  
Online Registration



► **Select Events/Competitions to login**

Events/Competitions	Dates	Closing Date	
Quota Beenleigh City of Logan Eisteddfod Dance Groups 2024 Logan Entertainment Centre, Wembley Road, Logan Central, QLD	26 Jul 2024 to 04 Aug 2024	01 May 2024	<a href="#">LOGIN</a>
Quota Beenleigh City of Logan Eisteddfod Dance Small Groups 2024 Crete Street Theatre, Beenleigh, QLD	24 Aug 2024 to 25 Aug 2024	01 Jun 2024	<a href="#">LOGIN</a>
Quota Beenleigh City of Logan Eisteddfod Dance Solos 2024 Crete Street Theatre, Beenleigh, QLD	29 Aug 2024 to 04 Sep 2024	01 Jun 2024	<a href="#">LOGIN</a>
Quota Beenleigh City of Logan Eisteddfod Music Groups 2024 Logan Entertainment Centre, Wembley Road, Logan Central, QLD	23 Jul 2024 to 25 Jul 2024	01 May 2024	<a href="#">LOGIN</a>
Quota Beenleigh City of Logan Eisteddfod Music Solos 2024 Crete Street Theatre, Beenleigh, QLD	15 Jul 2024 to 22 Jul 2024	01 May 2024	<a href="#">LOGIN</a>
Quota Beenleigh City of Logan Eisteddfod Speech & Drama 2024 Crete Street Theatre, Beenleigh, QLD	26 Aug 2024 to 28 Aug 2024	01 Jun 2024	<a href="#">LOGIN</a>

From the Home Page, click Register Now or login if you have an existing account

- If you are a new user, you will be able to set-up your account, then select our Eisteddfod
- Select **Dance Solos 2024**
- Press Login and you will be able to select the sections you wish to enter.
- If you have any issues using Comps-Online, please use the Contact Us section to obtain information from Comps-Online
- If you have any questions regarding sections, event dates, rules or the venue, please contact us at [solodance@quotabeenleigh.org.au](mailto:solodance@quotabeenleigh.org.au)

For all information about the Dance Solos Eisteddfod please access our website.

